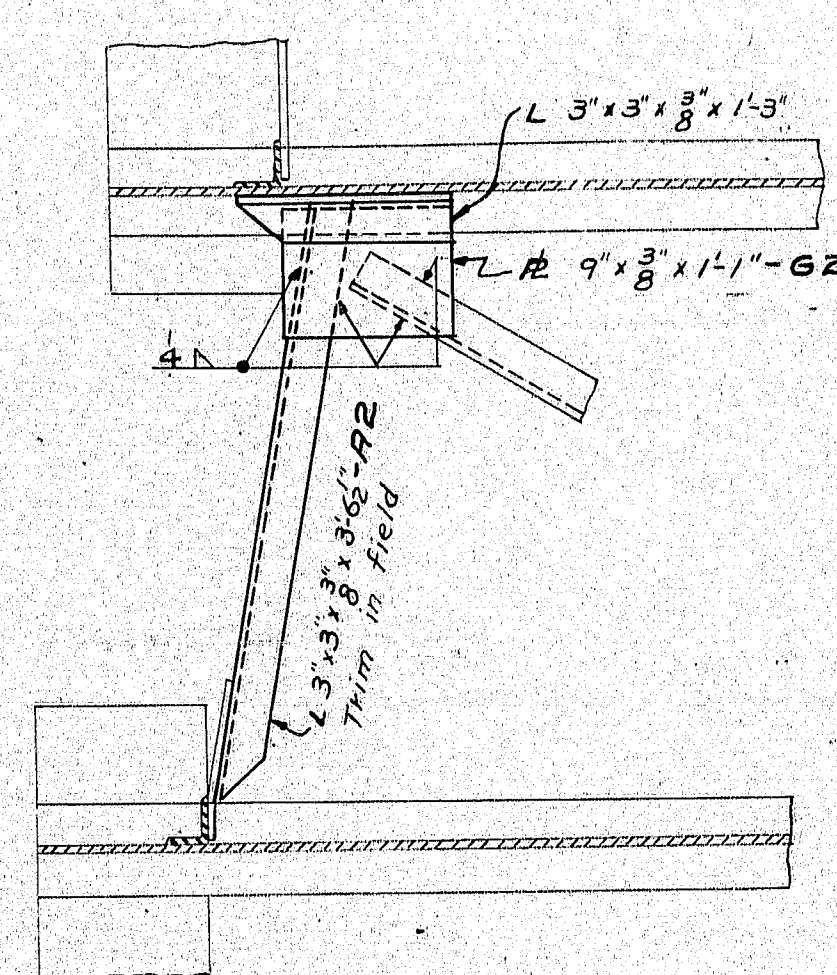
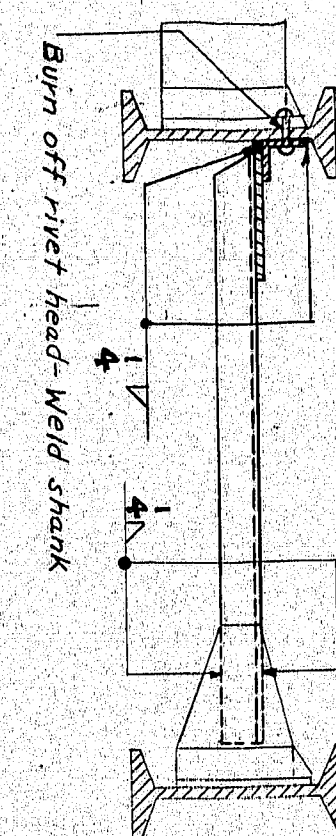
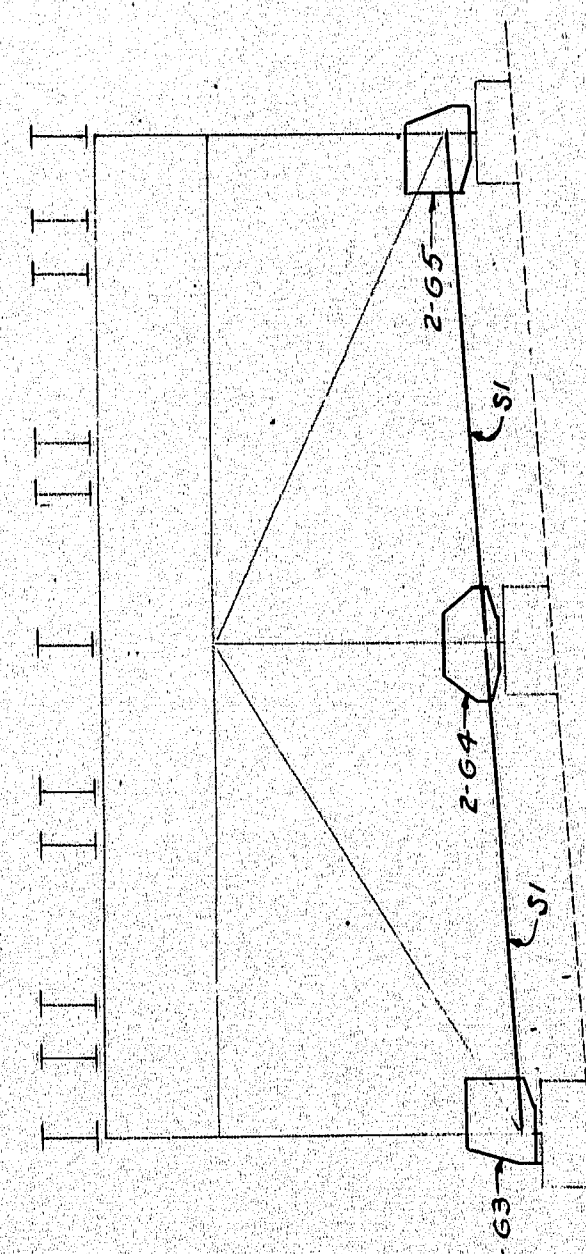


—PLAN ENGINE HOUSE TRACKS—
Scale: 1/4"=1'-0"



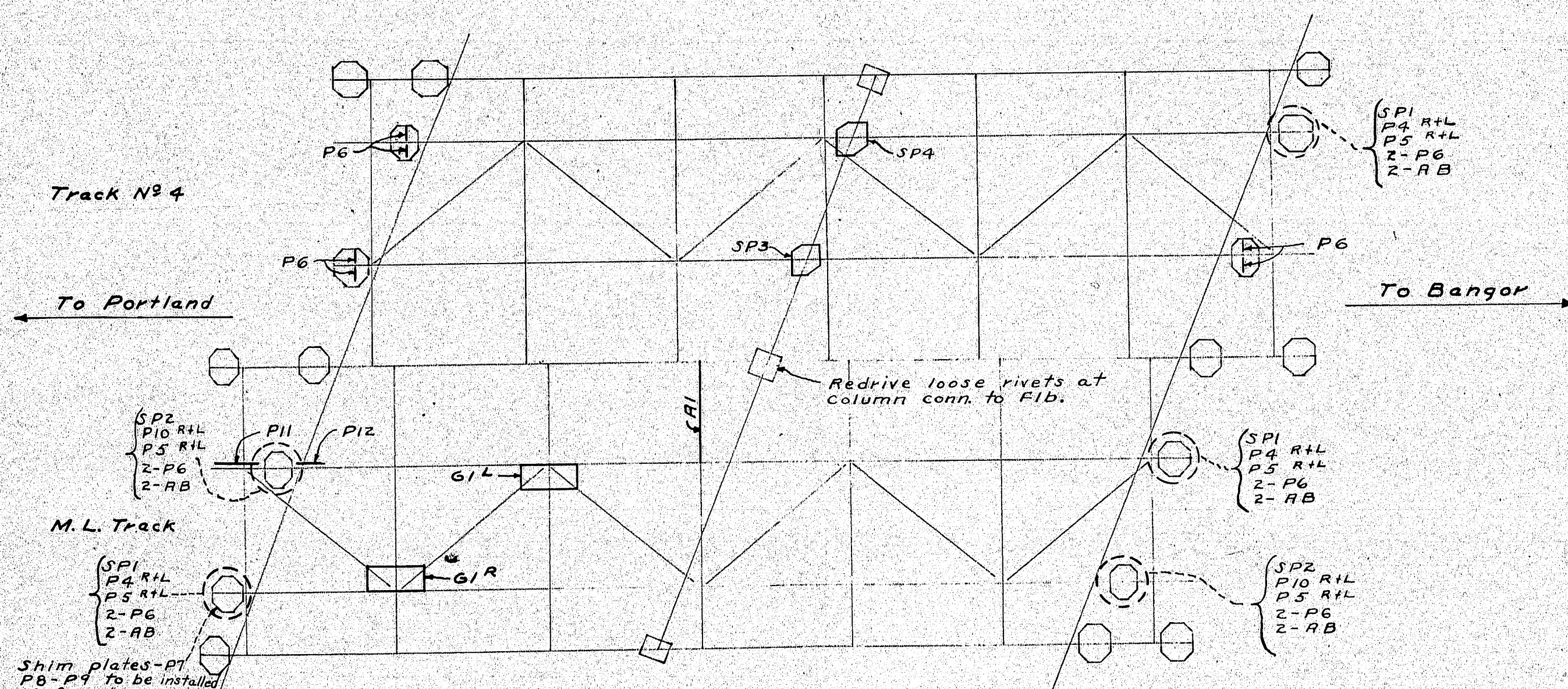
62-A2

FIELD RIVET LIST			
N ^o	Dia.	Grip	Length
150	7/8"	3/4"	2 1/2"
100	"	3/4"	2 1/2"
20	"	1"	2 1/2"
10	"	1 1/8"	2 1/2"
40	"	1 1/4"	2 1/2"
10	"	1 1/2"	3 1/2"
10	"	1 3/4"	3 1/2"
10	"	2"	3 1/2"

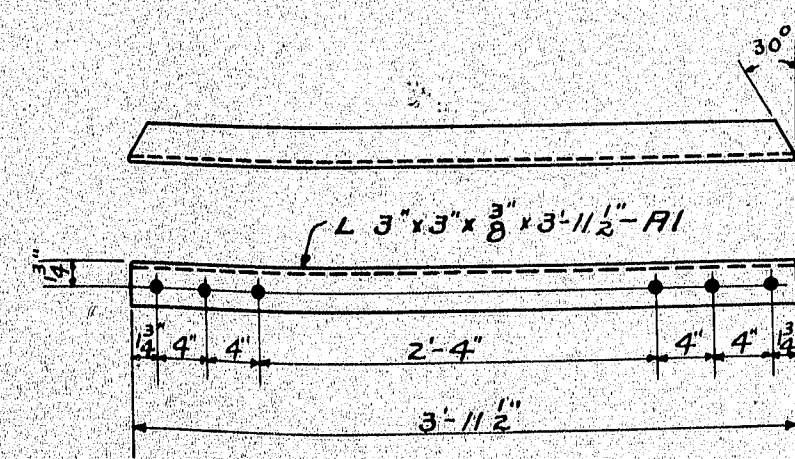
BILL OF MATERIAL					
N ^o	Mark	Shape	Length	Weight Lbs.	Remarks
1	A1	L 3"x3"x 3/8"x 11 1/2"	3'-11 1/2"	29	As detailed
1	A2	"	3'-6 1/2"	26	Ship blank
1	G1R	R 12"x 3/8"	2'-3"	51	Shop Assembly
1	G1L	"	"	51	Opposite hand
1	G2	R 9"x 3/8"	1'-1"	22	Shop Assembly
2	G3	R 19"x 3/8"	2'-0 1/2"	100	As detailed
2	G4	R 15"x 3/8"	2'-9"	105	"
2	G5	R 19"x 3/8"	2'-0 1/2"	100	"
2	S1	Strut Complete	10'-9 3/4"	438	"
1	P1	R 8 1/2"x 1/2"	6'-9 1/4"	144	"
1		Sole R 12"x 1/2"	2'-2"	"	Shop weld to P1
6	P2	R 3 1/2"x 1/2"	0'-6"	18	As detailed
4	P3	R 3 1/2"x 1/2"	0'-6"	12	"
2	G6	R 18"x 3/8"	2'-1 1/2"	98	"
2	G7	R 18"x 3/8"	2'-1 1/2"	98	"
2	S2	Strut Complete	11'-6 3/4"	493	"
3	SP1	R 18"x 3/8"	3'-0 1/2"	420	"
2	SP2	R 18"x 3/8"	4'-11 3/8"	455	"
3	P4R	R 4 3/8"x 1/2"	2'-4 1/2"	32	Shop welded to SP1 opposite hand
3	P4L	"	"	32	"
5	P5R	R 4"x 1/2"	1'-4"	45	As detailed
5	P5L	"	"	45	Opposite hand
16	P6	R 5"x 3/4"	2'-7 1/4"	530	As detailed
2	P7	R 15"x 4"	1'-6"	38	"
2	P8	R 15"x 4"	1'-6"	38	"
2	P9	R 15"x 4"	1'-6"	20	"
2	P10R	R 4 3/8"x 1/2"	4'-3 3/8"	40	Shop welded to SP2 opposite hand
2	P10L	"	"	40	"
1	P11	R 12"x 1/2"	1'-9 1/2"	37	Ship blank
1	P12	R 9"x 1/2"	0'-9"	12	"
1	SP3	R 15"x 3/8"	1'-4"	13	As detailed
1	SP4	R 15"x 3/8"	1'-4"	38	"
10	AB	1" Anchor Bolts	0'-9"	20	"
1	G8	R 9"x 3/8"	1'-10"	34	Shop Assembly

GENERAL NOTES

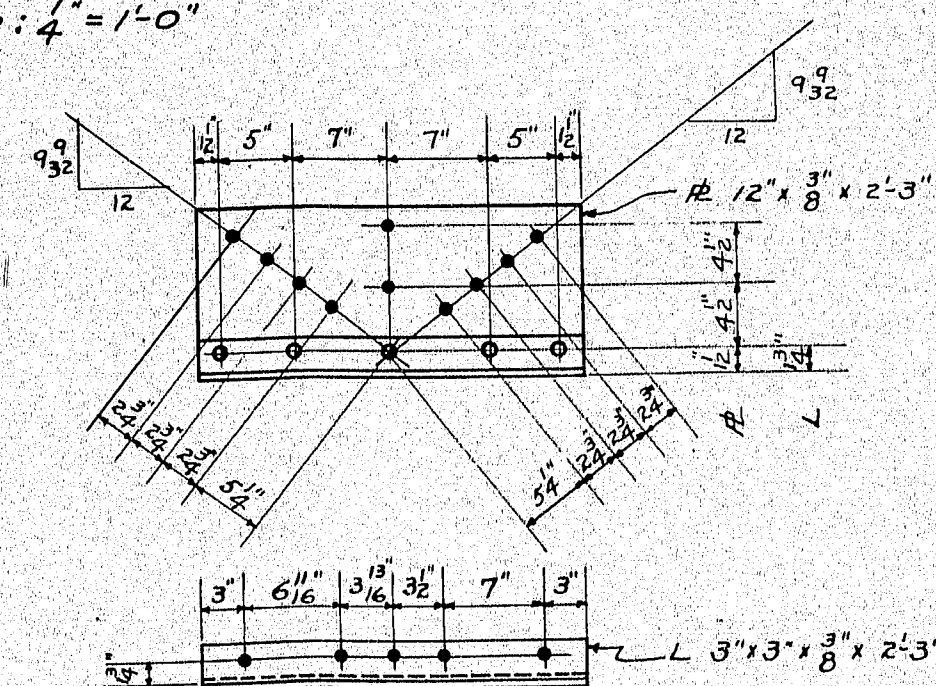
Material and workmanship to be in accordance with Boston and Maine Railroad "General Specifications For Repairing Steel Structures".
Old work shown by light lines.
New " " heavy "
Rivets 8" φ, Open holes 16" φ
Contractor will notify Office of Engineer of Structures when steel will be ready for inspection.



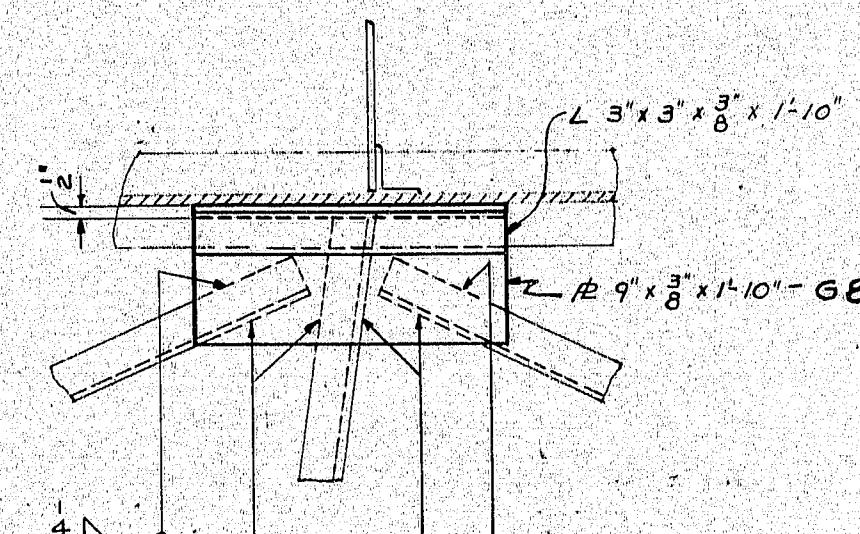
—PLAN MAIN LINE TRACKS—
Scale: 1/4"=1'-0"



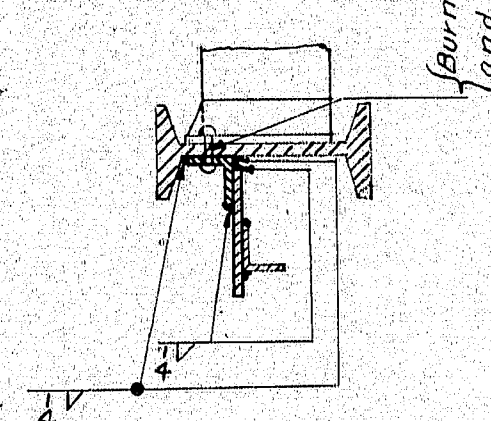
A1



G1R



G8




127-347

REPAIR PLAN

MAINE CENTRAL RAILROAD
Portland Division M.L.-Lower Road
Valuation Section N^o
BRIDGE N^o 135.96
"DUTTON STREET"
BANGOR, MAINE.

Scale: 1/4"=1'-0"
From Office of Chief Engineer Boston, Mass.

A	1-10-46	Original			Drawn	E.L.	Approved:  Engineer of Structures
Issue	Date	Description	Made	Appd.	Checked	E.L.	
Table of Issues and Changes							
Use Only Prints of Latest Date							
					Corrected	E.L.	Sheet 1 of 3 Sheets

24'x42'
1376-127